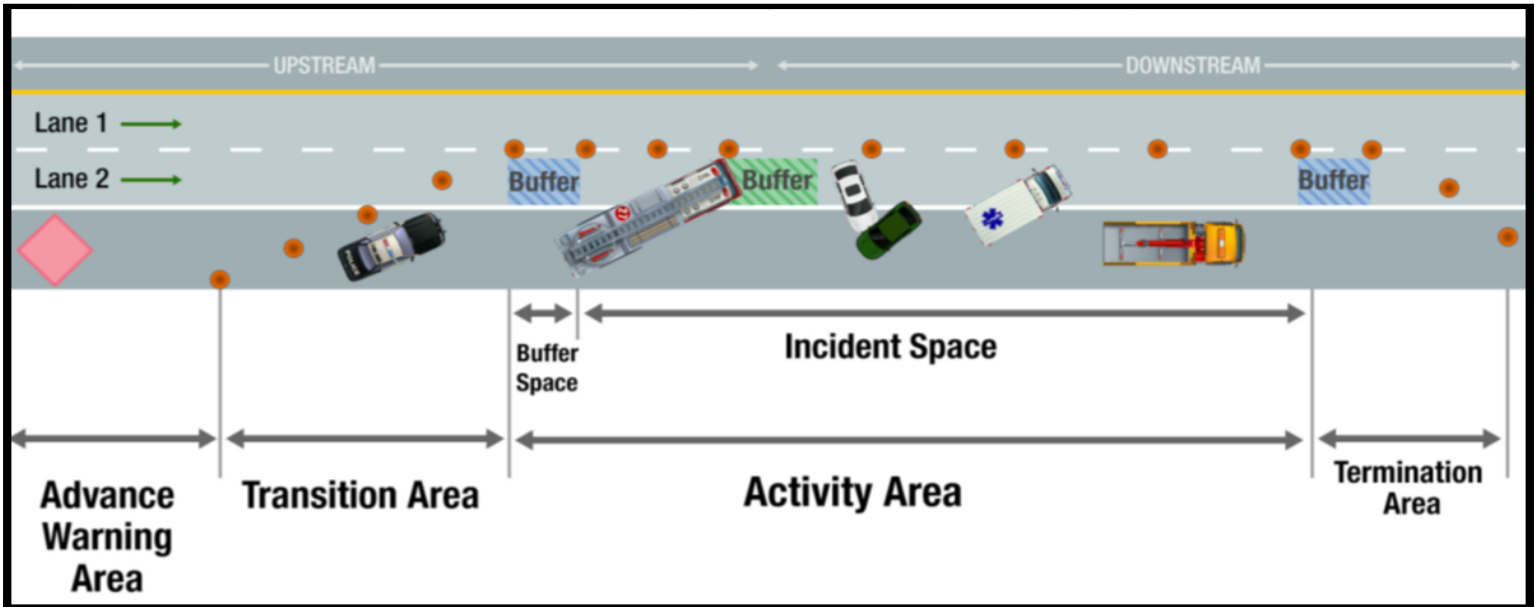




BALTIMORE COUNTY FIRE DEPARTMENT

ROADWAY INCIDENT TACTICAL CARD



TEMPORARY TRAFFIC CONTROL ZONE

ADVANCE WARNING AREA		INITIAL FIRE UNIT(S)	INITIAL EMS UNIT(S)	SECONDARY FIRE UNIT(S)
MPH	DISTANCE	ACTIONS	ACTIONS	ACTIONS
40	320 ft.	Position at angle to deflect traffic	Position downstream and within the protective envelope of the fire unit	Position upstream of the incident to provide advance warning using the chart on the left
55	440 ft.	Communicate lane/shoulder position of incident to incoming units	Angle rear of unit away from active traffic lanes for safe patient loading	Position at angle to deflect traffic. Avoid use of rear facing scene lights that may blind drivers
65	520 ft.			
70	560 ft.	Designate a spotter	Remain on the roadway only as long as needed to stabilize the patient. Exit highways and continue treatment/evaluation on a secondary roadway/parking lot	
		Request additional resources (CHART, etc)	<p>*Minor apparatus (DC/BC/EMS cars, utilities, brush units, etc.) <u>do not</u> provide adequate blocking protection and should be positioned downstream of the blocker*</p>	